

Resolution Opposing the Peripheral Canal

San Joaquin County Board of
Supervisors

C. Mel Lytle, Ph.D.

Water Resource Coordinator

Advisory Water Commission

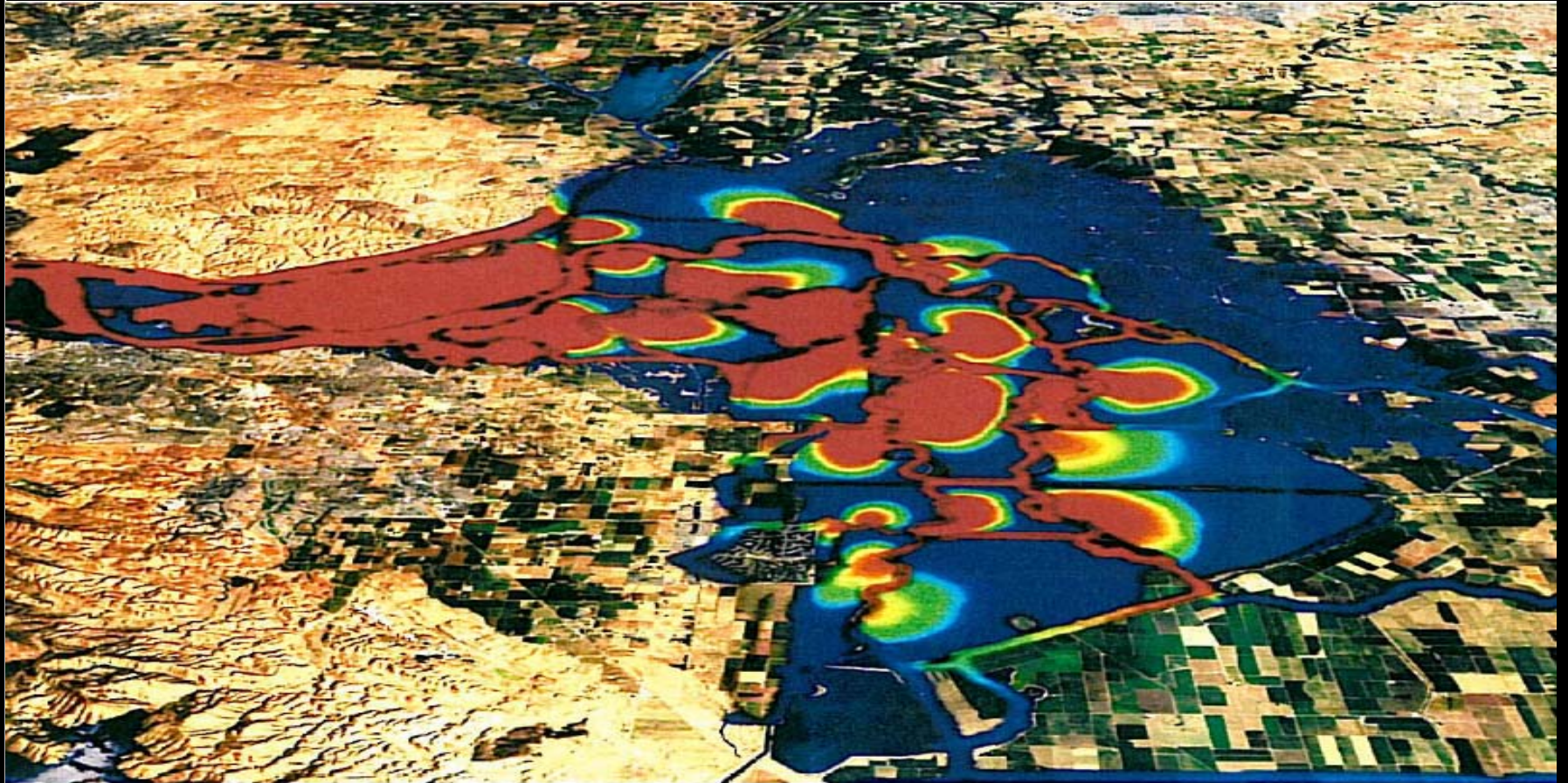
September 19, 2007

Recent Delta Events

- -- June 2004 Jones Tract levee failure highlighted the vulnerability of the delta
- -- Delta's pelagic fish species at all-time lows, despite multi-billion dollar efforts to protect them through the failed CALFED
- -- Hurricane Katrina. Levees around New Orleans supposedly built to withstand a 250-year flood -- melted away like sandcastles at high tide
- "Katrina was like a cup of coffee -- bitter, but it should wake you up -- Association of California Water Agencies
- State & Federal Rulings
- Delta is broken & not sustainable



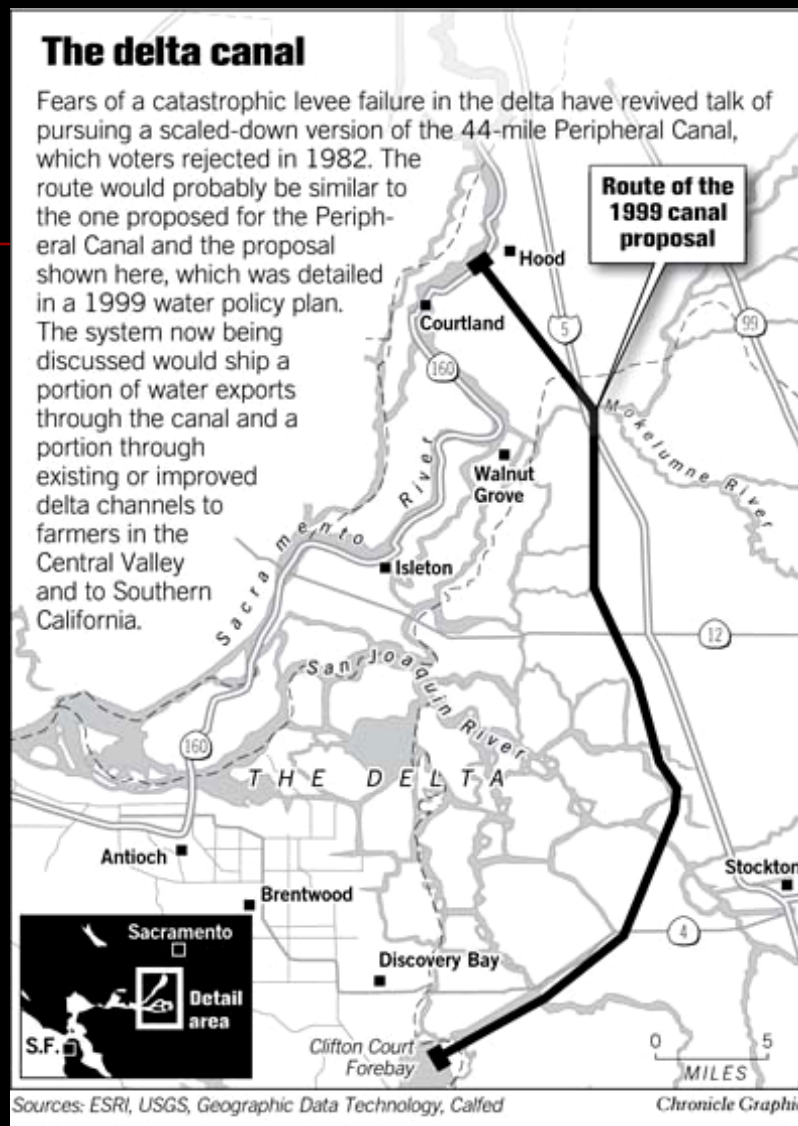
Delta's Seismic Vulnerability



Salt intrusion 36 hours after earthquake

1982 “Revisited”

- Judge Ronald Robie, then Director of DWR, led battle for passage of SB 200, a measure authorizing expanded State Water Project -- Peripheral Canal.
- Signed by Governor Brown but overturned by a 1982 referendum
- Robie still voices great pride in winning legislative passage (“both houses by a two-thirds vote”) of controversial legislation. **“It was a very significant legislative achievement,”** said Robie



Historic Position of County

- 1982 -- Resolution 791 Opposed the authorization, funding, and construction of the proposed Peripheral Canal project (SB 200).
- 1991 -- Position not changed in communications with Contra Costa County
- 1998 – CALFED Draft EIR/EIS Hearing: “The historic opposition of the County to the Peripheral Canal is strongly re-asserted. The Board is unalterably opposed to any isolated facility transporting water from the Sacramento River directly to the State and Federal pumps”, said George L. Barber, Supervisor San Joaquin County

CALFED Alternative #3 Map



Senator Joe Simitian – Senate Bill

- “the Delta is going to hell in a hand basket. And somehow people think the status quo is working”

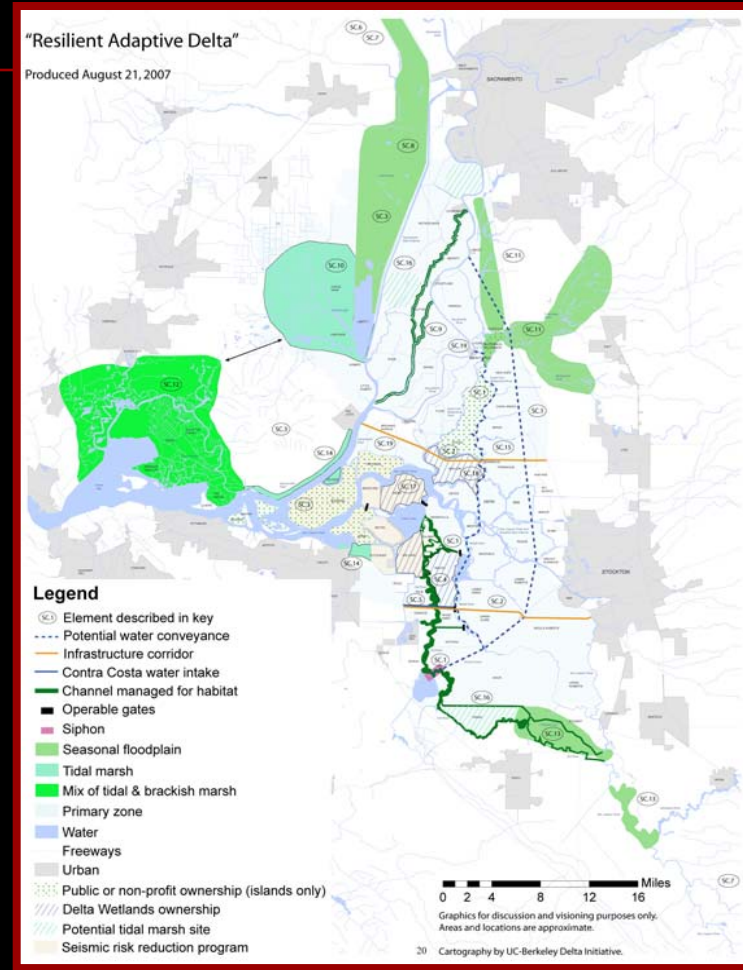
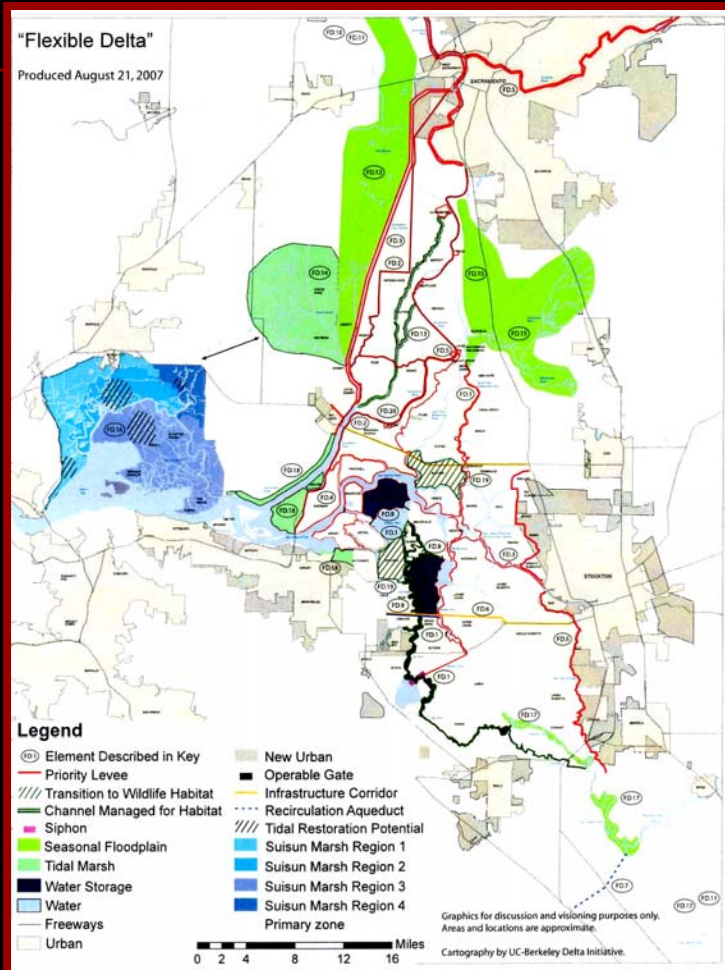


Senator Mike Machado

- They're proposing something that many people think would be disastrous for the Delta," State Sen. Mike Machado



Delta Visions – Flexible, Resilient



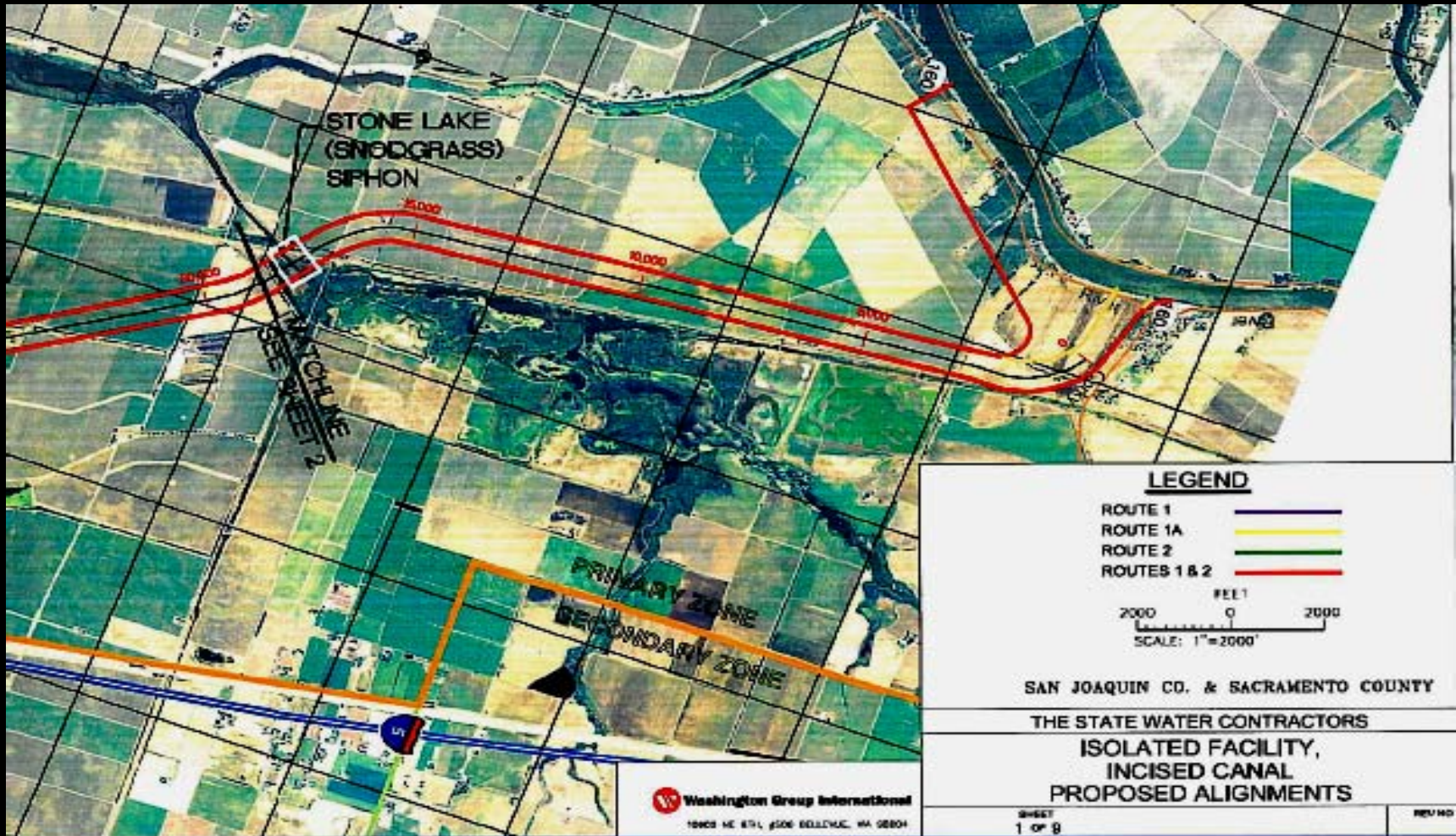
Metropolitan Water District

- The Met was a main supporter of the original Peripheral Canal but has since distanced itself from discussions about the canal out of concern it will sour relations with Northern California agencies
- Recently, the Met Board has taken action to support a Dual Conveyance facility concept, Through-Delta & Peripheral Canal

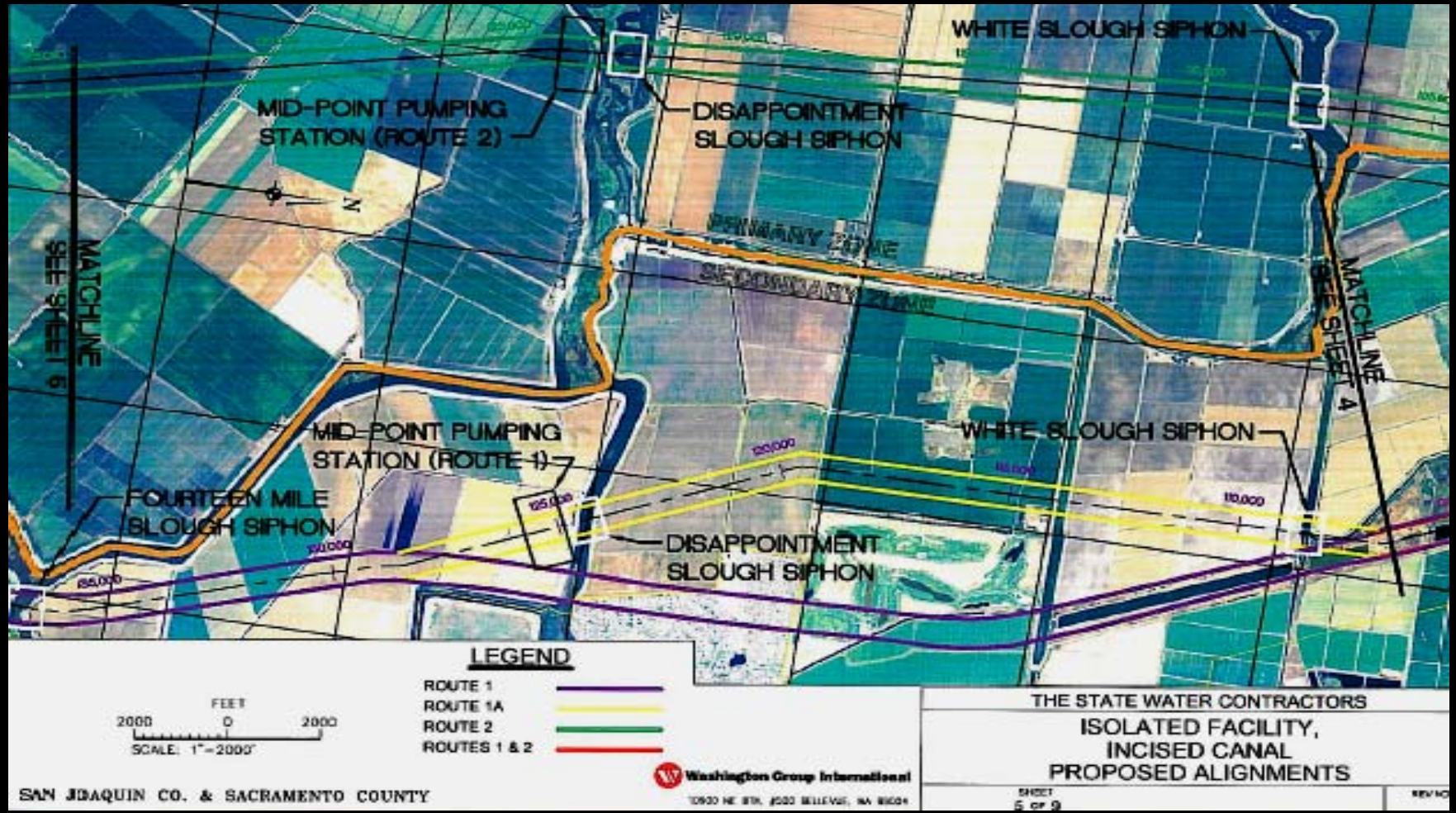


METROPOLITAN WATER DISTRICT
of SOUTHERN CALIFORNIA

Example of Proposed Alignment 1



Example of Proposed Alignment 2

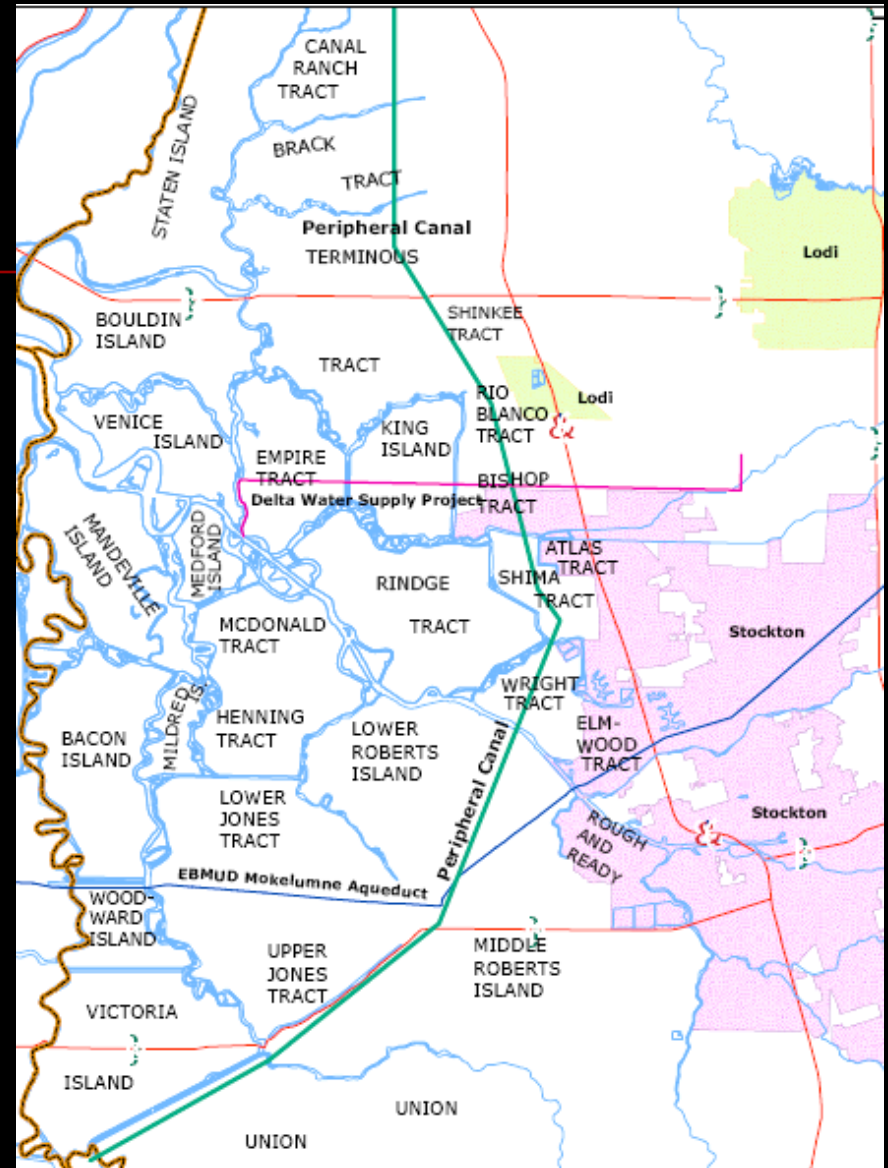


Example of Proposed Alignment 3



Local Impacts

- Water Quantity & Quality
- Agriculture
- Business
- Infrastructure
- Recreation
- Fisheries & Habitat
- Flood Control/ Seepage
- Rights of Way
- Water Conservation



Staff Recommendation

- No Basis to Change Historic Position Regarding the Isolated Facility
- Numerous Impacts to County Interests
- Recommendation that Board of Supervisors Oppose Peripheral Canal
- Other Alternative Solutions are Available



Reasons for Board Action

- State Legislature – Special Session
- Possible State Referendum – February 2008
- California Partnership for the San Joaquin Valley
 - Urgent that Partnership endorse by resolution to support the peripheral canal
- Delta Vision Process Preliminary Report
 - Flexible, Resilient Delta
- San Joaquin Farm Bureau Federation Position
- Other Issues & Activities

Public Awareness Campaign

California's Water:

A CRISIS WE CAN'T IGNORE.

UNDER CONSTRUCTION

Our site is currently under construction.
Check back soon for updates.

The Association of California Water Agencies (ACWA), a coalition of 450 public water agencies, has launched a statewide public education program, entitled "California's Water: A Crisis We Can't Ignore," to educate Californians about critical challenges now confronting the state's water supply and delivery system.



The program is aimed at raising awareness among Californians of current and future water problems, including a deepening crisis in the Sacramento-San Joaquin River Delta. If left unaddressed, these problems could affect water users in every region of the state in the coming months and years. Unfortunately, despite intense media attention and focus by state leaders, the public is largely unaware of this crisis.

Our program is just kicking off, so check back soon for updates, more information and a more extensive web site!

Learn more about the program!

Press Release

ENGLISH
SPANISH

Fact Sheet

FAQs

Ads

Powerp

Sponsored by:



Association
of California
Water Agencies

ACWA Campaign Conti-

Today's Water Crisis Affects All Californians



- California cannot prosper without a safe and reliable supply of water
- We must have a water system that works for the environment and people
- Clean and affordable water is the critical ingredient in sustaining the state's thriving economy
- If our water supply and infrastructure systems fail, the impacts would be felt in homes and businesses across the state
- Failure could trigger widespread water shortages and mandatory rationing

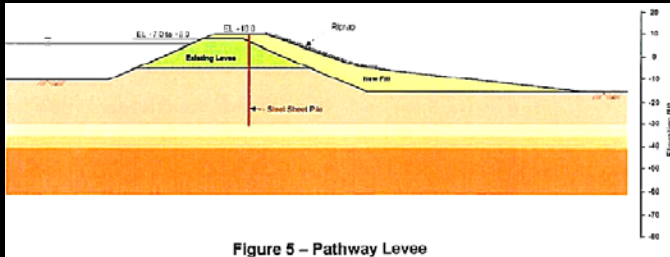
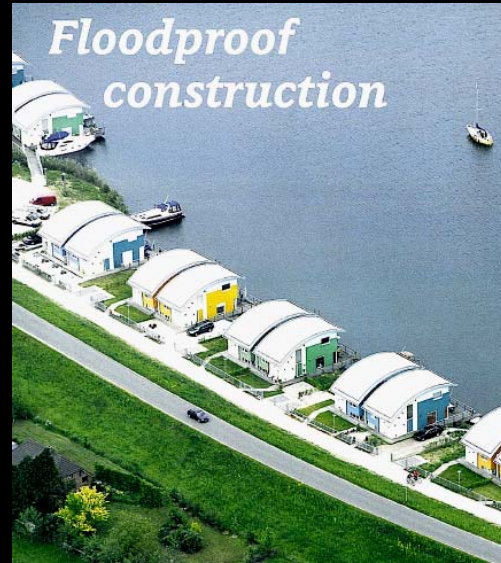
Resolution Opposing the Canal

- NOW THEREFORE, BE IT RESOLVED that the San Joaquin County Board of Supervisors opposes the development of a Peripheral Canal or any other isolated water conveyance facility in the Delta; and hereby urges the following:
- 1. That State water interests pursue regional solutions and limit exports from the Delta to water which is truly surplus to all present and future beneficial needs including environmental needs of the Delta and other areas of origin.
- 2. That the Delta be maintained as a common pool of good quality water for local and export water use.
- 3. That new water supplies in the State of California be developed through greater conservation, recycling, conjunctive use of ground and surface water, desalinization of brackish and ocean waters, local water storage, water reclamation and improved management of flood waters for the recharge of overdrafted groundwater basins.

Resolution Conti-

- 4. That local and regional water resource management activities be supported to develop and utilize local regulatory storage and other projects for improved conjunctive use, recharge capability and groundwater storage.
- 5. That Delta levees strengthened and gates and other facilities installed at strategic locations to improve Delta sustainability and facilitate recovery from flood, seismic and other emergencies.
- 6. That emergency response plan be developed, financed and implemented to provide improved State and local capability to respond to flood, seismic and other emergencies in the Delta.

Future Sustainability





North Polder

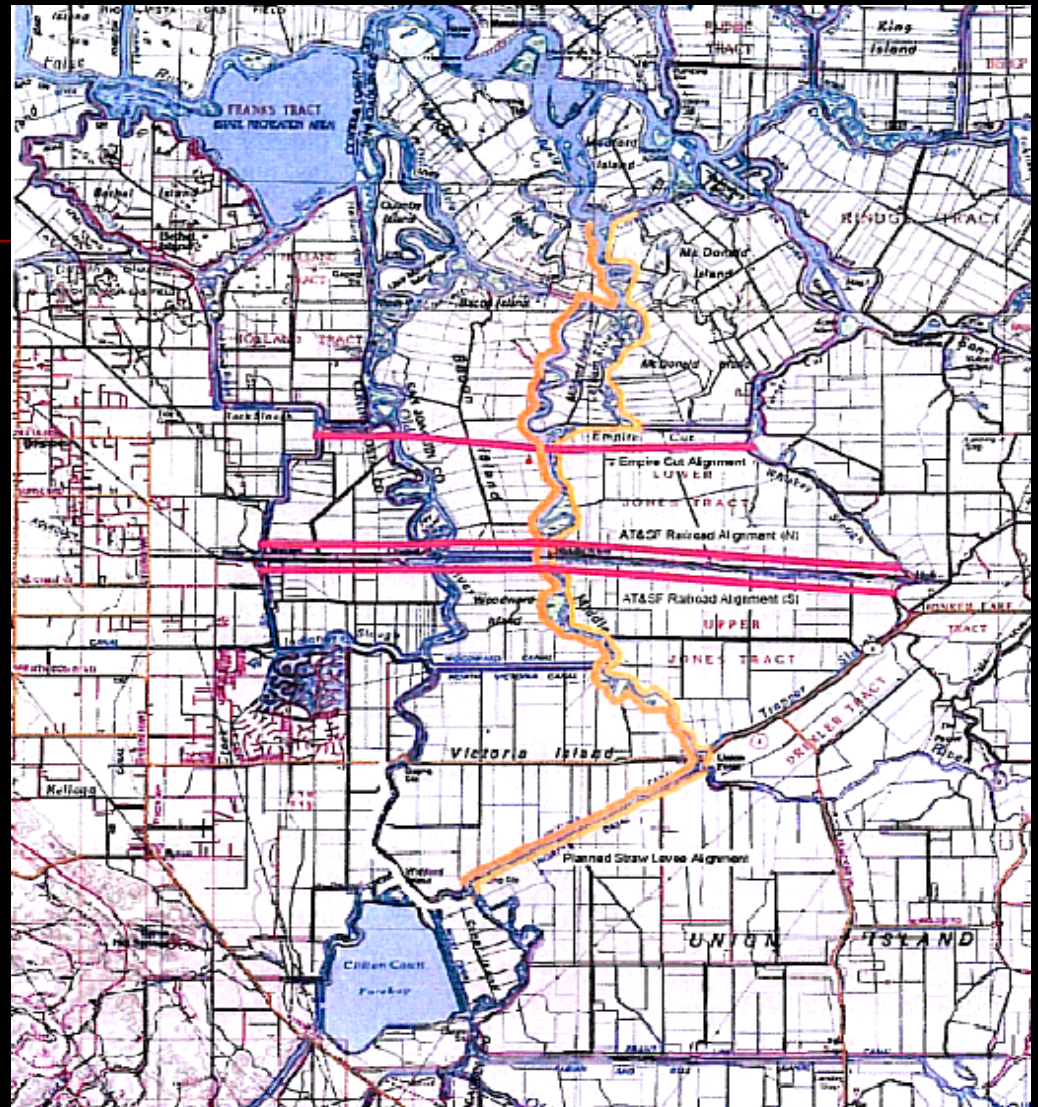
East Polder

South Polder

Emergency Response Planning



METROPOLITAN WATER DISTRICT
of SOUTHERN CALIFORNIA



“God created the earth, but the Dutch
created Holland,”



Dutch Polder
Scenes

Summary

- It seems prudent that discussions and actions of the State should look to find those water resource strategies of a more regional focus including conjunctive use rather than the inopportune resurrection and perpetuation of historically divisive project alternatives such as the Peripheral Canal.

Epilog

- “As long as the Sierra’s stand, snow falls and rivers run, the Sacramento-San Joaquin Delta will be sustainable. Our overuse, abuse and neglect of this vital resource is not.”